



CE100

PERSONAL PROGRAMMING SYSTEM

REFERENCE MANUAL

This Personal Programming System is used to program the HX850S Floating Marine Transceiver with GPS.

With this Programming System, you can quickly and easily program the Standard Horizon HX850S operating channels from your personal computer.

INSTALLING OR REMOVAL OF PROGRAM

Minimum System Requirements

- IBM®-Compatible PC with Pentium processor.
- Windows® XP, Windows® 2000, or Windows® Vista Operating System.
- Up to 20 Megabytes of free hard disk drive space
- Mouse or other pointing device
- 256-color display adapter (24-bit color recommended) and monitor with 640 x 480 resolution or higher.

INSTALLING THE “PROGRAMMING SOFTWARE”

1. Install the CE100 Programming Software onto your computer’s hard disk drive.
2. If your operating system is Windows XP, click the “**Start**” button and select “**Run ...**” then browse to where the files were saved on the hard disk drive in step 1 and select either “CE100.msi” or “setup.exe” and press the [ENTER] key.
3. Follow the directions on your computer screen.

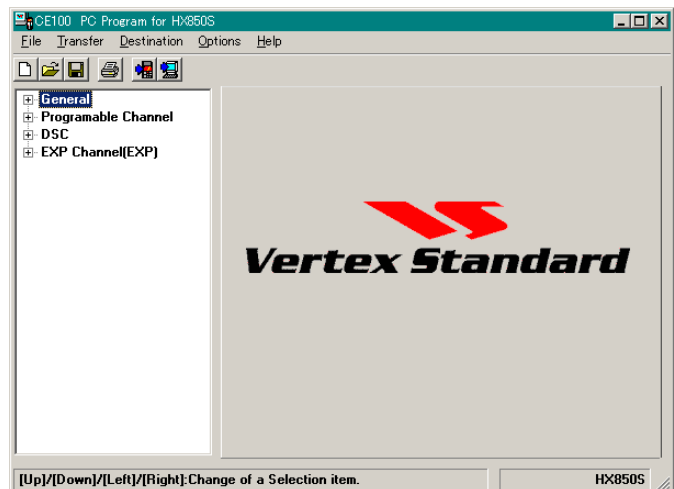
TO REMOVE THE “PROGRAMMING SOFTWARE” FROM YOUR COMPUTER

1. Click the “**Start**” button and select “**Settings,**” then “**Control Panel.**”
2. Select “**Add/Remove Programs**” from the “Control Panel” page.
3. Select “**CE100**” then click “**Add/Remove**” box.

MAIN SCREEN

The CE100 Personal Programming System consists of two major sections: the “**SYSTEM TREE VIEW**” (left side) and its lower folder (right side).

The “**SYSTEM TREE VIEW**” consists of three categories: the “**General**”, “**Programmable Channel**”, “**DSC**”, and “**EXP Channel**”.



“GENERAL” SELECTION

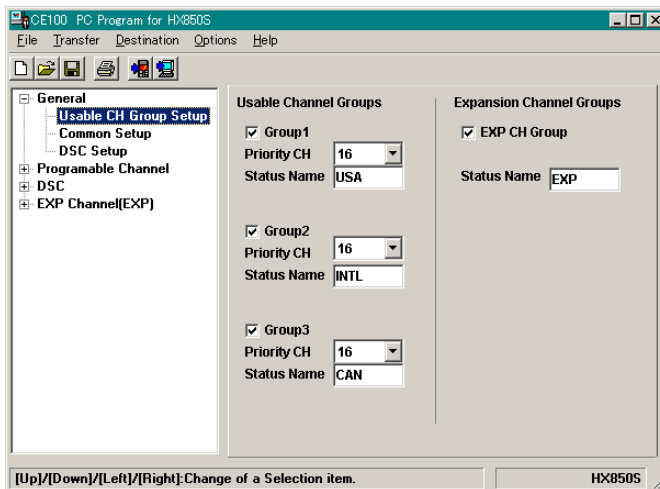
Double click the left mouse button on the “**General**” selection in the left window of the screen to display its lower folder (“**Usable CH Group Setup**”, “**Common Setup**”, and “**DSC Setup**”), then click the left mouse button on the desired folder to display its contents.

USABLE CH (CHANNEL) GROUP SETUP

Group1/ Group2/ Group3/ EXP CH Group:

These parameters determine which of the possible Channel Groups shall be “Used ()” or “Not Used ()” for the radio.

When the “**EXP CH Group**” parameter is set to “Used ()”, the “**EXP Channel**” category is produced under the “**DSC**” category on the “**SYSTEM TREE VIEW.**”



Priority CH (Channel):

This parameter selects the Priority Channel to be used during Priority Scan and Dual Watch operation.

Status Name:

This parameter enters the four character Alpha/Numeric “Tag” used to identify the Channel Group when the Status Icon is disappeared.

To enter the Alpha/Numeric Tag, click the left mouse button on this parameter to enable programming, then type the characters of the desired Alpha/Numeric Tag. Now, press the [ENTER] key to save the programmed “Tag.”

The characters to be used include “0 ~ 9”, “A ~ Z”, “a ~ z”, and some characters.

“GENERAL” SELECTION

COMMON SETUP

Starting TX Mode (TX Po Display):

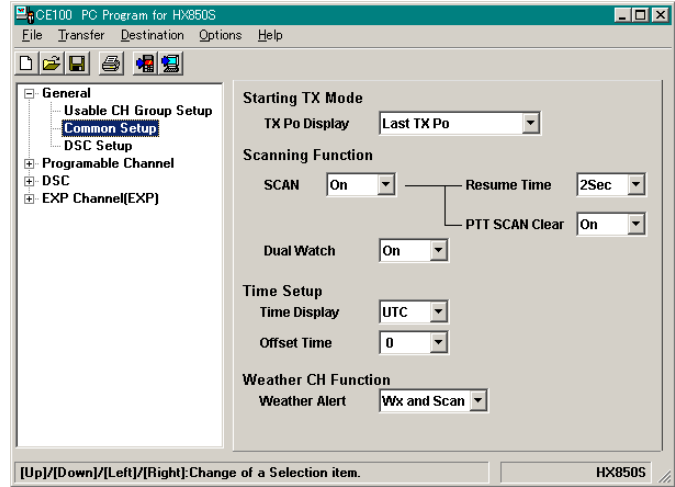
This parameter sets the TX output power used when the radio is first turned on.

Available selections are:

Lo Po Only: Sets the TX output power to “LO,” when the radio is turned on.

Lo Po on Changing CH: Sets the TX output power to “LO,” when the radio is turned on or when you switch to a different channel.

Last TX Po: Sets the TX output power to the same setting used when the radio was turned off.



Scanning Function (Scan):

This parameter toggles the Scan feature “On” or “Off.”

Scanning Function (Resume Time):

This parameter selects the Scan Resume Time. Available values are “1Sec”, “2sec”, “3sec”, “4sec”, “5sec”, and “Off.”

When this parameter is set to “1Sec”, “2sec”, “3sec”, “4sec”, or “5sec” The scanner will hold for the selected period (seconds), then resume whether or not the other station is still transmitting. When this parameter is set to “Off,” the scanner will stop when a signal is received, and will not restart.

Scanning Function (PTT Scan Clear):

This parameter defines whether the Scan function shall be aborted (“On”) or not aborted (“Off”) when the PTT switch is pressed while Scanning is engaged.

Scanning Function (Dual Watch):

This parameter toggles the Dual Watch feature “On” or “Off.”

Time Setup (Time Display):

This parameter sets the display to be shown in local time (“Local”) or UTC time (“UTC”).

Time Setup (Offset Time):

This parameter sets the time offset of your local time from the UTC time.

“GENERAL” SELECTION

Weather CH Function (Weather Alert):

This parameter sets the Weather Alert features. Available selections are:

Off: The Weather Alert feature is not enabled.

On Wx: The Weather Alert feature is enabled while receiving on a Weather (Wx) Channel.

On Scan: The Weather Alert feature is enabled while the Scan feature is activated.

Wx and Scan: The Weather Alert feature is enabled during Weather (Wx) Channel reception, or while Scanning is engaged.

“GENERAL” SELECTION

DSC SETUP (“BASIC SETUP” TAB)

Available DSC CH Group

(Group1/Group2/Group3/EXP):

These parameters define whether the DSC function shall be Enabled “**On**” or Disabled “**Off**” for each Channel Group.

User MMSI:

This parameter programs the User MMSI which is used on Marine Transceiver capable of using Digital Selective Calling (DSC).

To program the User MMSI, click the left mouse button on this parameter to enable programming, then enter the nine digits MMSI number. Now, press the [**ENTER**] key to save the programmed MMSI number.

Important Notice: Entering the wrong number may gave to trouble to another DSC user. Enter the correct number absolutely.

Clear:

This button clears the MMSI number.

Click the left mouse button on the [**CLEAR**] button to clear the current MMSI number.

Distress Cancel Call:

This parameter define whether the Distress Cancel Call feature shall be Enabled “**On**” or Disabled “**Off**.”

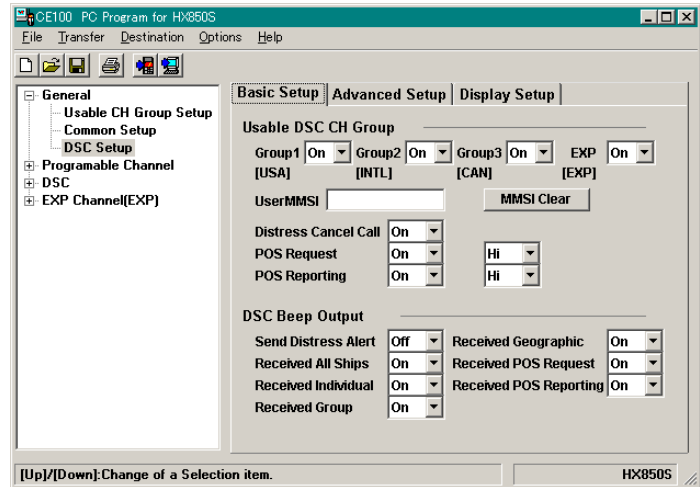
When this parameter is set to “**On**,” you may send a message to other vessels to cancel the Distress Call that was made in error.

POS Request:

This parameter define whether the Position Request feature shall be Enabled “**On**” or Disabled “**Off**.”

When this parameter is set to “**On**,” allows you to know the position of another vessel.

You may select the transmit output power between “**Hi**” and “**Low**” when sending the POS Request by selection box at the right hand of this parameter.



“GENERAL” SELECTION

POS Reporting:

This parameter defines whether the Position Send feature shall be Enabled “**On**” or Disabled “**Off**.”

When this parameter is set to “**On**,” allows you to send your position to another vessel. You may select the transmit output power between “**Hi**” and “**Low**” when sending the POS Send by the selection box at the right hand of this parameter.

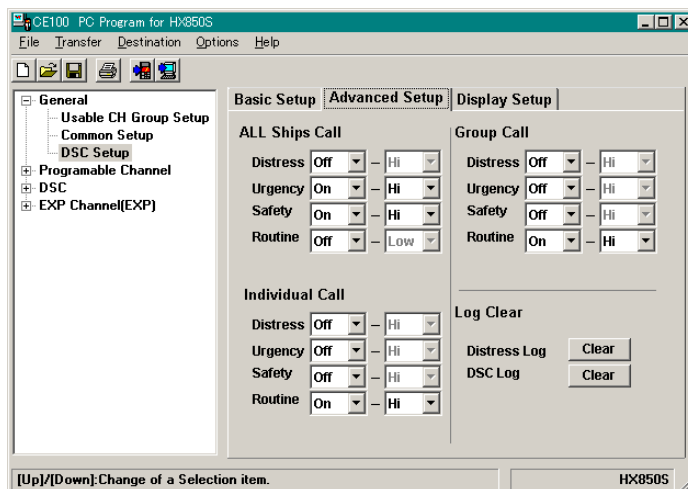
DSC Beep Output:

These parameters define whether the Special Acoustic Beep output shall be Enabled “**On**” or Disabled “**Off**” for each DSC signal is received.

DSC SETUP (“ADVANCED SETUP” TAB)

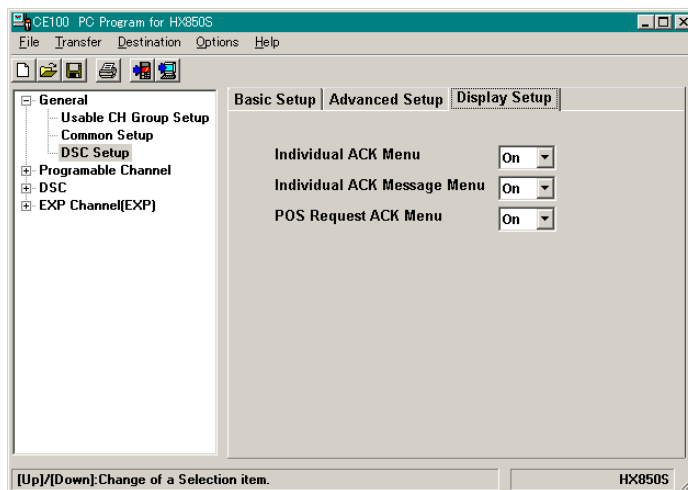
These parameters define whether the each DSC service shall be Enabled “**On**” or Disabled “**Off**” for each categories.

You may select the transmit output power of the Enabled “**On**” category between “**Hi**” and “**Low**” by the selection box at the right hand of each category.



DSC SETUP (“DISPLAY SETUP” TAB)

These parameters define whether the ACK Menu list shall be Listed “(On)” or not “(Off)” for each ACK menu.



“PROGRAMMABLE CHANNEL” SELECTION

Double click the left mouse button on the “Programmable Channel” selection in the left window of the screen to display its lower folder (“Group1”, “Group2”, “Group3”, and “Weather”), then click the left mouse button on the desired folder to display the “Program Channel List Table.” The “Program Channel List Table” can not be edited.

“GROUP1”, “GROUP2”, “GROUP3”, (AND “EXP CHANNEL”) FOLDER

CH: *Channel Number*

This parameter indicates the operating channel number.

RX [MHz]: *Receive frequency*

This parameter indicates the Receive frequency of the channel.

TX [MHz]: *Transmit frequency*

This parameter indicates the Transmit frequency of the channel.

CH	RX[MHz]	TX[MHz]	TX	LOW	UP	DUP	MEM	CH Name
01A	156.050	156.050	TX	---	--	---	---	VTS
05A	156.250	156.250	TX	---	--	---	---	VTS
06	156.300	156.300	TX	---	--	---	---	SAFETY
07A	156.350	156.350	TX	---	--	---	---	COMMERCIAL
08	156.400	156.400	TX	---	--	---	---	COMMERCIAL
09	156.450	156.450	TX	---	--	---	---	CALLING
10	156.500	156.500	TX	---	--	---	---	COMMERCIAL
11	156.550	156.550	TX	---	--	---	---	VTS
12	156.600	156.600	TX	---	--	---	---	VTS
13	156.650	156.650	TX	LOW	UP	---	---	BRG/BRG
14	156.700	156.700	TX	---	--	---	---	VTS
15	156.750	---	---	---	--	---	---	COMMERCIAL
16	156.800	156.800	TX	---	--	---	---	DISTRESS

TX: *Enable/Disable the Transmission*

This parameter indicates whether the transmitter shall be Enabled (“TX”) or Disabled (“--”) on this channel.

LOW: *Transmitter Power Output*

This parameter indicates the transmitter’s power output. Default values are programmed into each channel, according to international standards.

UP: *Transmit Power Selection (User Power)*

This parameter indicates whether transmit power selection capability by the user shall be Enabled (“UP”) or Disabled (“--”).

DUP: *Duplex Operation*

This parameter indicates whether duplex operation (separate transmit/receive frequencies) shall be Enabled (“DUP”) or Disabled (“---”).

MEM: *Memory Channel Scan*

This parameter indicates whether the memory scanning (M-SCAN) shall be Enabled (“MEM”) or Disabled (“--”).

CH Name: *Alpha/Numeric “Tag”*

This parameter indicates the Alpha/Numeric “Tag” used to identify the channel.

“PROGRAMMABLE CHANNEL” SELECTION

“WX CHANNEL” FOLDER

Enable: Channel Operation Status

This parameter toggles whether the channel shall be Enabled (“”) or Disabled (“”) for operation.

Scan: Memory Channel Scan

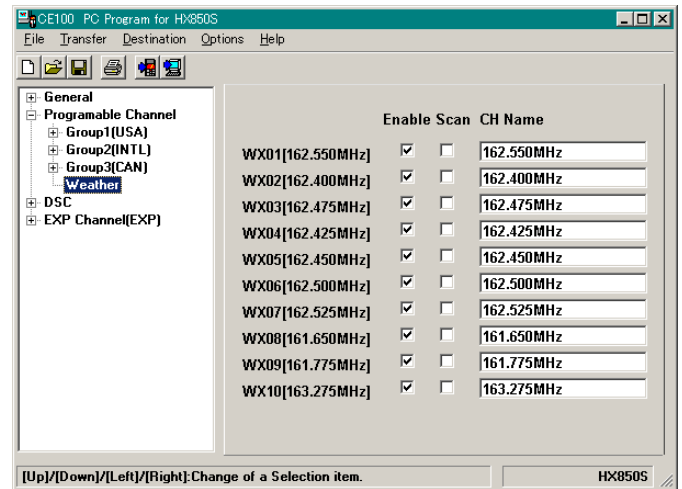
This parameter determines whether scanning of this channel shall be Enabled (“”) or Disabled (“”).

CH Name: Alpha/Numeric “Tag”

This field allows entry of the 12-character Alpha/Numeric “Tag” used identify the WX channel.

To enter the Alpha/Numeric Tag, click the left mouse button on this parameter to enable programming, then type the characters of the desired Alpha/Numeric Tag, then press the [ENTER] key to save the programmed “Tag.”

The characters to be used include 0 ~ 9 and A ~ Z.



“PROGRAMMABLE CHANNEL” WINDOW

This section displays the channel list, and allows selection of the channel on which you wish to make changes to the configuration of the channel.

Double click the *left* mouse button on the each items (“**Group1**”, “**Group2**”, “**Group3**,” or “**EXP Channel**”) to display its lower folder.

On the lower folder in the left column, click the *left* mouse button on any channel to open its programming window, so you can program or modify the channel data on that channel.

CH Enable: *Enables/Disables the Channel*

This parameter toggles whether this channel shall be Enabled (“”) or Disabled (“”) for operation.

CH Display: *Channel Number*

This parameter indicates the operating channel number.

This parameter can not be edited.

Rx Frequency: *Receive frequency*

This parameter indicates the Receive frequency of the channel.

This parameter can not be edited.

Tx Frequency: *Transmit frequency*

This parameter indicates the Transmit frequency of the channel.

This parameter can not be edited.

Tx Enable: *Enables/Disables Transmission*

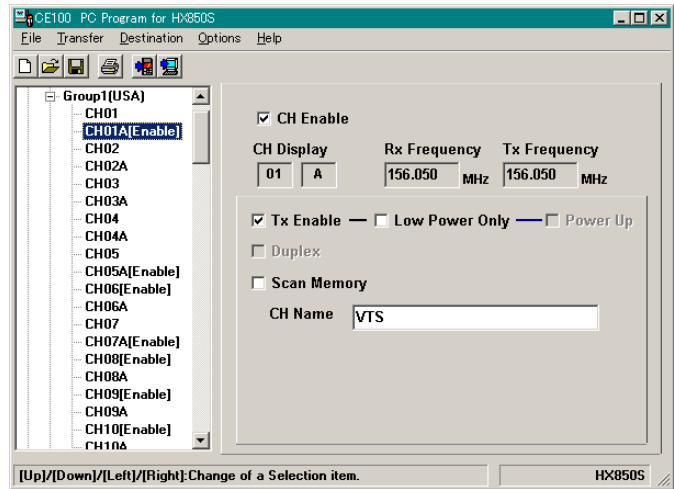
This parameter defines whether the transmitter shall be Enabled (“”) or Disabled (“”) on this channel.

Low Power Only: *Transmitter Power Output*

This parameter toggles the transmitter’s power output on this channel between HI (“”) or Low (“”).

Power Up: *Transmit Power Selection Capability*

This parameter toggles whether the transmit power selection by the user shall be Enabled (“”) or Disabled (“”). This parameter is ignored when the “**Low Power Only**” parameter is set to HI (“”).



“PROGRAMMABLE CHANNEL” WINDOW

Duplex: *Duplex Operation*

This parameter toggles whether duplex operation (separate transmit/receive frequencies) shall be Enabled (“”) or Disabled (“”).

Scan Memory: *Memory Channel Scan*

This parameter toggles whether memory scanning (M-SCAN) shall be Enabled (“”) or Disabled (“”).

CH Name: *Alpha/Numeric “Tag”*

This field allows entry of the 16-character Alpha/Numeric “Tag” used to identify the channel.

The characters to be used include “0 ~ 9,” “A ~ Z,” “a ~ z,” and some characters.

“DSC” SELECTION

Double click the left mouse button on the “DSC” selection in the left window of the screen to display its lower folder (“Individual Directory” and “Group Directory”), then click the left mouse button on the desired folder to display the “Directory List Table.” The “Directory List Table” can not be edited.

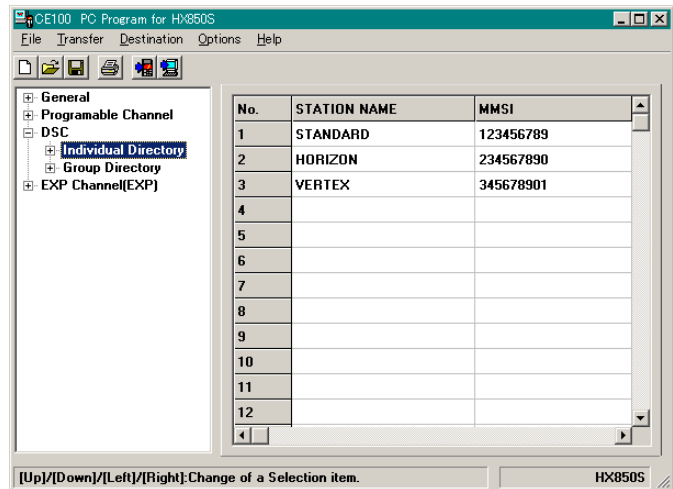
“INDIVIDUAL DIRECTORY” FOLDER

STATION NAME:

This parameter indicates the Station Name for each Individual Directory.

MMSI:

This parameter indicates the MMSI number for each Individual Directory.



No.	STATION NAME	MMSI
1	STANDARD	123456789
2	HORIZON	234567890
3	VERTEX	345678901
4		
5		
6		
7		
8		
9		
10		
11		
12		

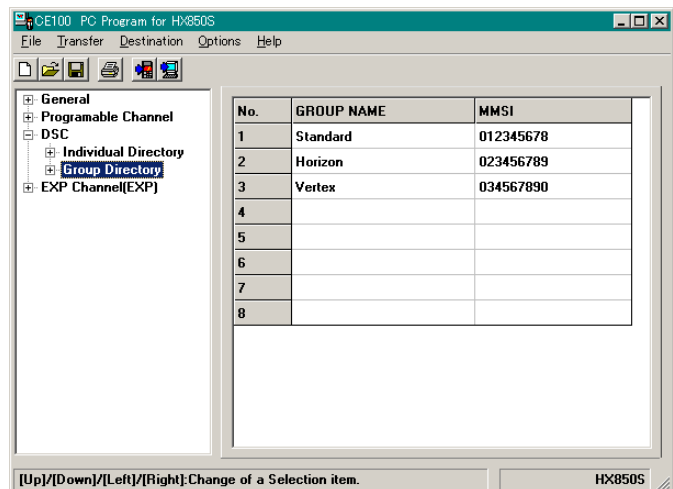
“GROUP DIRECTORY” FOLDER

STATION NAME:

This parameter indicates the Station Name for each Group Directory.

MMSI:

This parameter indicates the MMSI number for each Group Directory.



No.	GROUP NAME	MMSI
1	Standard	012345678
2	Horizon	023456789
3	Vertex	034567890
4		
5		
6		
7		
8		

“DSC” WINDOW

This section displays the directory list, and allows selection of the directory on which you wish to make changes to the configuration of the directory data.

Double click the *left* mouse button on the each items (“**Individual Directory**” or “**Group Directory**”) to display its lower folder.

On the lower folder in the left column, click the *left* mouse button on any memory to open its programming window, so you can program or modify the data on that memory.

“INDIVIDUAL DIRECTORY” WINDOW

Add/Delete:

These parameters select whether this Individual ID is “**Add** () to” or “**Delete** () from” the “Individual Directory” Table.

Station Name:

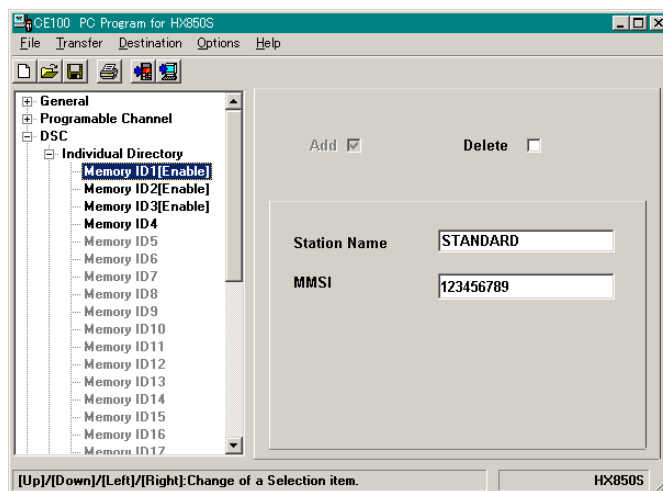
This parameter enter the 11 character Alpha/Numeric “Tag” which is registered into the Individual ID for used identify the channel. To enter the Alpha/Numeric Tag, click the left mouse button on this parameter to enable programming, then type the characters of the desired Alpha/Numeric Tag, then press the [ENTER] key to save the programmed “Tag.”

The characters to be used include “0 ~ 9,” “A ~ Z,” “a ~ z,” and some characters.

MMSI:

This parameter sets the nine digits MMSI ID code which is registered into the Individual ID.

To set the MMSI ID code, click the left mouse button on this parameter to enable programming, then enter the MMSI ID code.



“DSC” WINDOW

“GROUP DIRECTORY” WINDOW

Add/Delete:

These parameters select whether this Group ID is “Add () to” or “Delete () from” the “Group Directory” Table.

Group Name:

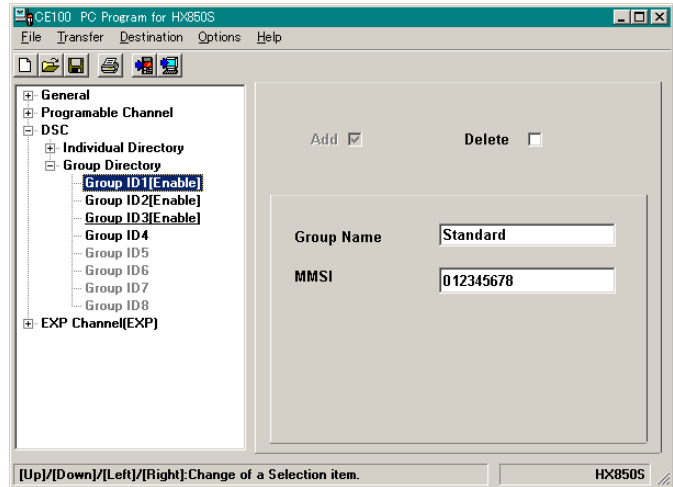
This parameter enter the 11 character Alpha/Numeric “Tag” which is registered into the Group ID for used identify the group.

To enter the Alpha/Numeric Tag, click the left mouse button on this parameter to enable programming, then type the characters of the desired Alpha/Numeric Tag, then press the [Enter] key to save the programmed “Tag.”

The characters to be used include “0 ~ 9,” “A ~ Z,” “a ~ z,” and some characters.

MMSI:

This parameter sets the nine digits MMSI ID code which is registered into the Group ID. To set the MMSI ID code, click the left mouse button on this parameter to enable programming, then enter the MMSI ID code from the second digit. The first digit (permanently set to “0”) is entered already.




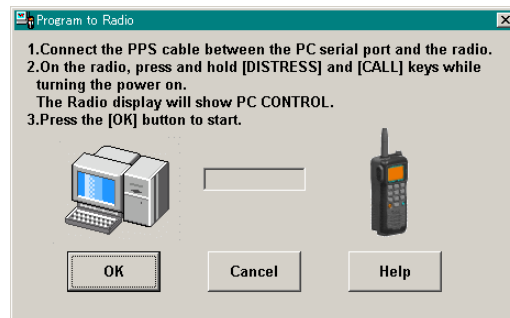
TRANSFER MENU

This menu performs the Downloading or Uploading information from/to a radio. To Download/Upload data to/from radio, make the proper connections between the computer and radio and turn on the radio before selecting the “**TRANSFER**” menu.

“PROGRAM TO RADIO” ITEM


The “**Program to Radio**” item downloads the programming data from the computer to the radio.

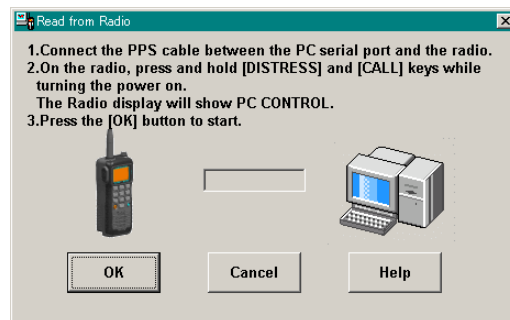
To do this: click the left mouse button on the “**Program to Radio**” item (or the “” icon) to open the pop-up window, then click the left mouse button on the “**OK**” box to download the programming data to the radio.



“READ FROM RADIO” ITEM

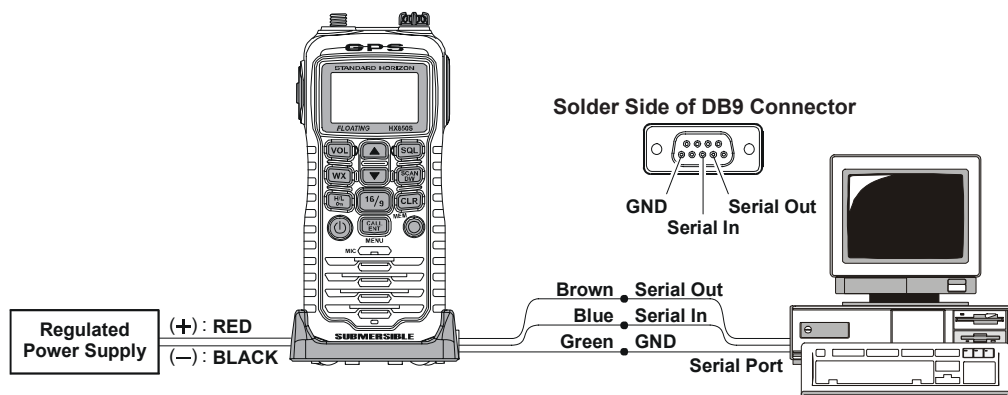
The “**Read from Radio**” item uploads the programming data from the radio to the computer.

To do this: click the left mouse button on the “**Read from Radio**” item (or the “” icon) to open the pop-up window, then click the left mouse button on the “**OK**” box to upload the programming data from the radio to the computer.



PROGRAMMING SETUP

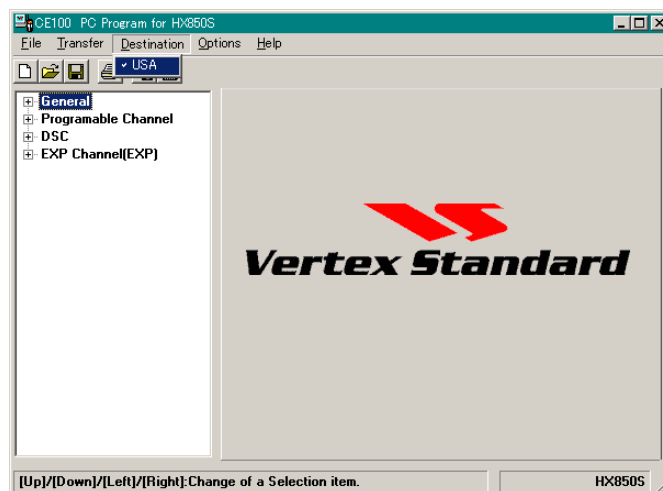
1. Turn the transceiver off.
2. Connect the HX850S Alignment Jig between the Computer and **HX850S**, as shown below.
3. Press and hold in the [**DISTRESS**] and [**CALL(ENT)MENU**] keys while turning the transceiver on to enter the programming mode (“**PC CONTROL**” notification will appear on the LCD).



DESTINATION MENU

This menu allows you to initialize the all settings of the programming data to the desired country specified.

Click the left mouse button on the “**Destination**” menu tab, then click the left mouse button on the country which you wish to initialized to specified.

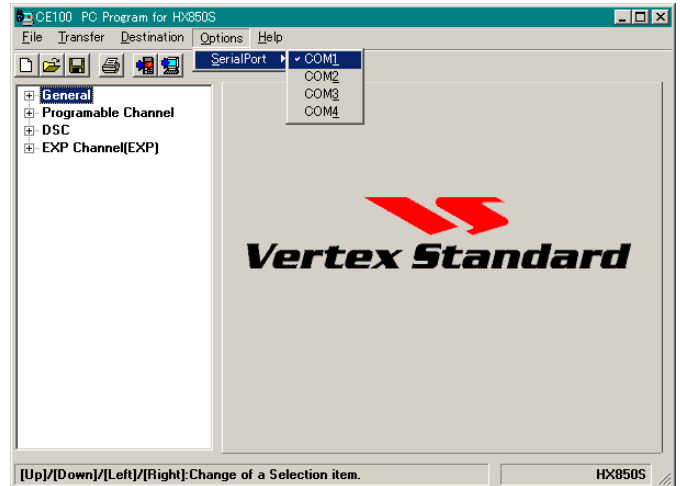


OPTION MENU

This menu allows you to set up the program according to your computer's configuration.

“SERIAL PORT” ITEM

This item selects the communication port which is connected to the HX850S. Click the left mouse button on the communication port (“**COM1**,” “**COM2**,” “**COM3**,” or “**COM4**”) which is connected to the HX850S Alignment Jig.



CHANNEL LIST (USA)

CH	TX (MHz)	RX (MHz)	S/D	LO PWR	CHANNEL NAME
01 A	156.050	156.050	S	—	VTS
05 A	156.250	156.250	S	—	VTS
06	156.300	156.300	S	—	SAFETY
07 A	156.350	156.350	S	—	COMMERCIAL
08	156.400	156.400	S	—	COMMERCIAL
09	156.450	156.450	S	—	CALLING
10	156.500	156.500	S	—	COMMERCIAL
11	156.550	156.550	S	—	VTS
12	156.600	156.600	S	—	VTS
13	156.650	156.650	S	LO	BRG/BRG
14	156.700	156.700	S	—	VTS
15	—	156.750	S	—	COMMERCIAL
16	156.800	156.800	S	—	DISTRESS
17	156.850	156.850	S	LO	SAR
18 A	156.900	156.900	S	—	COMMERCIAL
19 A	156.950	156.950	S	—	COMMERCIAL
20	157.000	161.600	D	—	PORT OPR
20 A	157.000	157.000	S	—	PORT OPR
21 A	157.050	157.050	S	—	CCG
22 A	157.100	157.100	S	—	USCG
23 A	157.150	157.150	S	—	USCG
24	157.200	161.800	D	—	TELEPHONE
25	157.250	161.850	D	—	TELEPHONE
26	157.300	161.900	D	—	TELEPHONE
27	157.350	161.950	D	—	TELEPHONE
28	157.400	162.000	D	—	TELEPHONE
63 A	156.175	156.175	S	—	VTS
65 A	156.275	156.275	S	—	PORT OPR
66 A	156.325	156.325	S	—	PORT OPR
67	156.375	156.375	S	LO	BRG/BRG
68	156.425	156.425	S	—	SHIP-SHIP
69	156.475	156.475	S	—	PLEASURE
70	—	156.525	S	—	DSC
71	156.575	156.575	S	—	PLEASURE
72	156.625	156.625	S	—	SHIP-SHIP
73	156.675	156.675	S	—	PORT OPR
74	156.725	156.725	S	—	PORT OPR
75	156.775	156.775	S	LO	PORT OPR
76	156.825	156.825	S	LO	PORT OPR
77	156.875	156.875	S	LO	PORT OPR
78 A	156.925	156.925	S	—	SHIP-SHIP
79 A	156.975	156.975	S	—	SHIP-SHIP
80 A	157.025	157.025	S	—	SHIP-SHIP
81 A	157.075	157.075	S	—	CCG
82 A	157.125	157.125	S	—	CCG
83 A	157.175	157.175	S	—	USCG
84	157.225	161.825	D	—	TELEPHONE
85	157.275	161.875	D	—	TELEPHONE
86	157.325	161.925	D	—	TELEPHONE
87A	157.375	157.375	S	—	COMMERCIAL
88 A	157.425	157.425	S	—	COMMERCIAL

CHANNEL LIST (INTL)

01	156.050	160.650	D	—	TELEPHONE
02	156.100	160.700	D	—	TELEPHONE
03	156.150	160.750	D	—	TELEPHONE
04	156.200	160.800	D	—	INTL
05	156.250	160.850	D	—	INTL
06	156.300	156.300	S	—	SAFETY
07	156.350	160.950	D	—	INTL
08	156.400	156.400	S	—	COMMERCIAL
09	156.450	156.450	S	—	CALLING
10	156.500	156.500	S	—	COMMERCIAL
11	156.550	156.550	S	—	VTS
12	156.600	156.600	S	—	VTS
13	156.650	156.650	S	—	BRG/BRG
14	156.700	156.700	S	—	VTS
15	156.750	156.750	S	LO	COMMERCIAL
16	156.800	156.800	S	—	DISTRESS
17	156.850	156.850	S	LO	SAR
18	156.900	161.500	D	—	INTL
19	156.950	161.550	D	—	INTL
20	157.000	161.600	D	—	PORT OPR
21	157.050	161.650	D	—	INTL
22	157.100	161.700	D	—	INTL
23	157.150	161.750	D	—	INTL
24	157.200	161.800	D	—	TELEPHONE
25	157.250	161.850	D	—	TELEPHONE
26	157.300	161.900	D	—	TELEPHONE
27	157.350	161.950	D	—	TELEPHONE
28	157.400	162.000	D	—	TELEPHONE
60	156.025	160.625	D	—	TELEPHONE
61	156.075	160.675	D	—	INTL
62	156.125	160.725	D	—	INTL
63	156.175	160.775	D	—	INTL
64	156.225	160.825	D	—	TELEPHONE
65	156.275	160.875	D	—	INTL
66	156.325	160.925	D	—	INTL
67	156.375	156.375	S	—	BRG/BRG
68	156.425	156.425	S	—	SHIP-SHIP
69	156.475	156.475	S	—	PLEASURE
70	—	156.525	S	—	DSC
71	156.575	156.575	S	—	PLEASURE
72	156.625	156.625	S	—	SHIP-SHIP
73	156.675	156.675	S	—	PORT OPR
74	156.725	156.725	S	—	PORT OPR
75	156.775	156.775	S	LO	PORT OPR
76	156.825	156.825	S	LO	PORT OPR
77	156.875	156.875	S	—	PORT OPR
78	156.925	161.525	D	—	INTL
79	156.975	161.575	D	—	INTL
80	157.025	161.625	D	—	INTL
81	157.075	161.675	D	—	INTL
82	157.125	161.725	D	—	INTL
83	157.175	161.775	D	—	INTL
84	157.225	161.825	D	—	TELEPHONE
85	157.275	161.875	D	—	TELEPHONE
86	157.325	161.925	D	—	TELEPHONE
87	157.375	157.375	S	—	PORT OPR
88	157.425	157.425	S	—	PORT OPR

CHANNEL LIST (CANADA)

CH	TX (MHz)	RX (MHz)	S/D	LO PWR	CHANNEL NAME
01	156.050	160.650	D	—	TELEPHONE
02	156.100	160.700	D	—	TELEPHONE
03	156.150	160.750	D	—	TELEPHONE
04 A	156.200	156.200	S	—	CCG
05 A	156.250	156.250	S	—	VTS
06	156.300	156.300	S	—	SAFETY
07 A	156.350	156.350	S	—	COMMERCIAL
08	156.400	156.400	S	—	COMMERCIAL
09	156.450	156.450	S	—	CALLING
10	156.500	156.500	S	—	COMMERCIAL
11	156.550	156.550	S	—	VTS
12	156.600	156.600	S	—	VTS
13	156.650	156.650	S	LO	BRG/BRG
14	156.700	156.700	S	—	VTS
15	156.750	156.750	S	LO	COMMERCIAL
16	156.800	156.800	S	—	DISTRESS
17	156.850	156.850	S	LO	SAR
18 A	156.900	156.900	S	—	COMMERCIAL
19 A	156.950	156.950	S	—	COMMERCIAL
20	157.000	161.600	D	LO	PORT OPR
21 A	157.050	157.050	S	—	CCG
22 A	157.100	157.100	S	—	USCG
23	157.150	161.750	D	—	INTL
24	157.200	161.800	D	—	TELEPHONE
25	157.250	161.850	D	—	TELEPHONE
26	157.300	161.900	D	—	TELEPHONE
27	157.350	161.950	D	—	TELEPHONE
28	157.400	162.000	D	—	TELEPHONE
60	156.025	160.625	D	—	TELEPHONE
61 A	156.075	156.075	S	—	CCG
62 A	156.125	156.125	S	—	CCG
63A	156.175	156.175	S	—	SHIP-SHIP
64	156.225	160.825	D	—	TELEPHONE
64 A	156.225	156.225	S	—	COMMERCIAL
65 A	156.275	156.275	S	—	PORT OPR
66 A	156.325	156.325	S	LO	PORT OPR
67	156.375	156.375	S	—	BRG/BRG
68	156.425	156.425	S	—	SHIP-SHIP
69	156.475	156.475	S	—	PLEASURE
70	—	156.525	S	—	DSC
71	156.575	156.575	S	—	PLEASURE
72	156.625	156.625	S	—	SHIP-SHIP
73	156.675	156.675	S	—	PORT OPR
74	156.725	156.725	S	—	PORT OPR
75	156.775	156.775	S	LO	PORT OPR
76	156.825	156.825	S	LO	PORT OPR
77	156.875	156.875	S	LO	PORT OPR
78 A	156.925	156.925	S	—	SHIP-SHIP
79 A	156.975	156.975	S	—	SHIP-SHIP
80 A	157.025	157.025	S	—	SHIP-SHIP
81 A	157.075	157.075	S	—	CCG
82 A	157.125	157.125	S	—	CCG
83	157.175	161.775	D	—	CCG
83 A	157.175	157.175	S	—	CCG
84	157.225	161.825	D	—	TELEPHONE
85	157.275	161.875	D	—	TELEPHONE
86	157.325	161.925	D	—	TELEPHONE
87	157.375	157.375	S	—	PORT OPR
88	157.425	157.425	S	—	PORT OPR

CHANNEL LIST (WEATHER CHANNEL)

CH	FREQUENCY	ENABLE/DISABLE	SCAN	CHANNEL NAME
WX01	162.550 MHz	Enable	Disable	162.550MHz
WX02	162.400 MHz	Enable	Disable	162.400MHz
WX03	162.475 MHz	Enable	Disable	162.475MHz
WX04	162.425 MHz	Enable	Disable	162.425MHz
WX05	162.450 MHz	Enable	Disable	162.450MHz
WX06	162.450 MHz	Enable	Disable	162.450MHz
WX07	162.525 MHz	Enable	Disable	162.525MHz
WX08	161.650 MHz	Enable	Disable	161.650MHz
WX09	161.775 MHz	Enable	Disable	161.775MHz
WX10	163.275 MHz	Enable	Disable	163.275MHz

