



STANDARD HORIZON®

GPS Chart Plotter Emulator



CP180/CP180i



CP300/CP300i



CPF180i



CPF300i



CPV350



CP500



CPV550

Installation Guide



TABLE OF CONTENTS

1. INTRODUCTION	3
1.0 GENERAL INFORMATION	3
2. GETTING STARTED	5
2.0 PLOTTER EMULATOR CAPABILITY	5
2.1 INSTALLING THE PLOTTER EMULATOR SOFTWARE	5

Copyright 2010. **STANDARD HORIZON** All rights reserved.
No part of this publication may be reproduced or distributed in any form or by any means, or stored in a database or retrieval system, without prior written permission of the publisher.

CODE: Issue A - 150310e

1. INTRODUCTION

1.0 GENERAL INFORMATION

The Standard Horizon GPS Chart Plotter Emulator is an application that allows you to explore the features and operations of a real Standard Horizon GPS Chart Plotter.

Standard Horizon has developed emulators that allow you to practice with a Standard Horizon GPS Chart Plotter while using a personal computer, and are compatible with Windows 2000, XP and Vista 32 only.

The emulator is controlled by moving the mouse icon over a key on the emulator and right clicking on the mouse key. The up left, right, up and down keys can also be used to move the cursor and move through the menus.

In addition, right clicking the mouse while not hovering the mouse over a button you will activate the [ENT] key. By left clicking the mouse while not hovering the mouse icon over a button you will activate the [CLR] key.

For your convenience the following chart areas have been pre-loaded into the emulator.

San Diego CA

Portland OR

Vancouver BC Canada

Seattle WA

Victoria WA

Saul Saint Marie MI

Georgian Bay MI

Staten Island NY

Washington DC

Charleston SC

Miami FL

Houston TX

If you have questions or comments, we invite you to email us at marinetech@vxstdusa.com, or contact our product support team at 800/767-2450 M-F 7:00 to 5:00 PST.

The available Standard Horizon GPS Chart Plotters are the following:

- CP180, CP180i and CPF180i
- CP300, CP300i and CPF300i
- CPV350
- CP500
- CPV550

After the PC Emulator program is downloaded from www.standardhorizon.com and loaded onto your PC (refer to section 2.1) you will be able to see and use a Standard Horizon GPS Chart Plotter on the display of your computer.

The GPS Chart Plotter screen is displayed on the real image of the GPS Chart Plotter. The user can click the GPS Chart Plotter keys on the screen and see the result on the screen

as he was operating the real unit.

If you have any questions or comments, we invite you to visit www.standardhorizon.com to send an E-Mail or contact the Product Support team at 800-767-2450 M-F 7:00-5:00PST.

2. GETTING STARTED

2.0 PLOTTER EMULATOR CAPABILITY

The Plotter Emulator has the following capabilities:

- Built in World Wide Background Maps

The Plotter Emulator does not have the following capabilities:

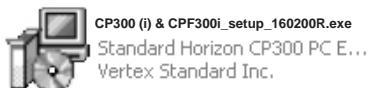
- Video Input
- VHF radio in and output via NMEA
- GPS Antenna connection
- Black Box Fish Finder and Radar

2.1 INSTALLING THE PLOTTER EMULATOR SOFTWARE

Download the Plotter Emulator software from the Standard Horizon web site and save to the desk top of your PC.

To start the installation procedure:

1. Double click on the Setup file (e.g. CP300 (i) & CPF300i_setup_160200R.exe).



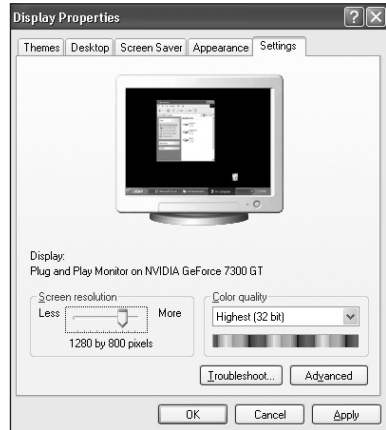
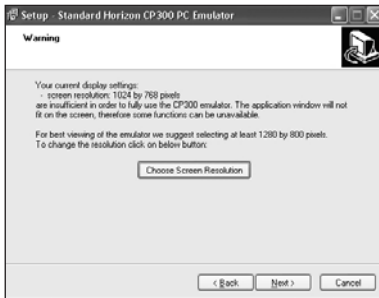
2. Click on Next button to continue with the installation or Cancel button to exit the Setup program.



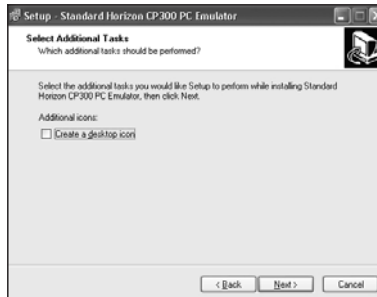
3. For best viewing, the screen resolution of your PC may have to be changed. When prompted, click on the Choose Screen Resolution button to show the Display Properties window will be shown. Locate the Screen area bar graph, click and drag the slider to the right until the desired screen resolution is selected (see the following table for the suggested screen resolution). After the screen resolution has been selected, press the OK button.

Screen Resolution Table

GPS Chart Plotter	Screen Resolution
CP180/180i	1024 x 768
CPF180i	1024 x 768
CP300/300i	1280 x 800
CPF300i	1280 x 800
CPV350	1280 x 800
CP500	1280 x 900
CPV550	1280 x 960



4. Click on the Create a desktop icon in the Select Additional Tasks window and click on the Next button.



5. A Ready to Install window will be shown, click on the Install button.



6. An Installing window will be shown displaying the progress of the installation of the Plotter Emulator. When this process is finished, the last window will be shown, click the Launch check box and click on Finish to start the emulator.

